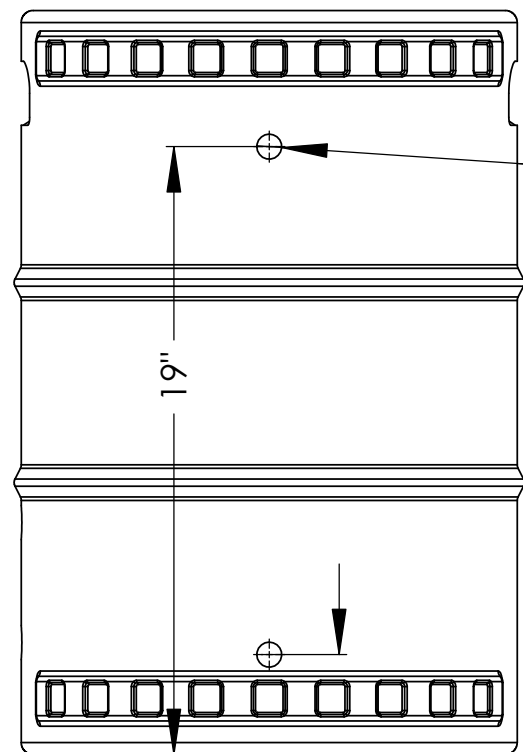
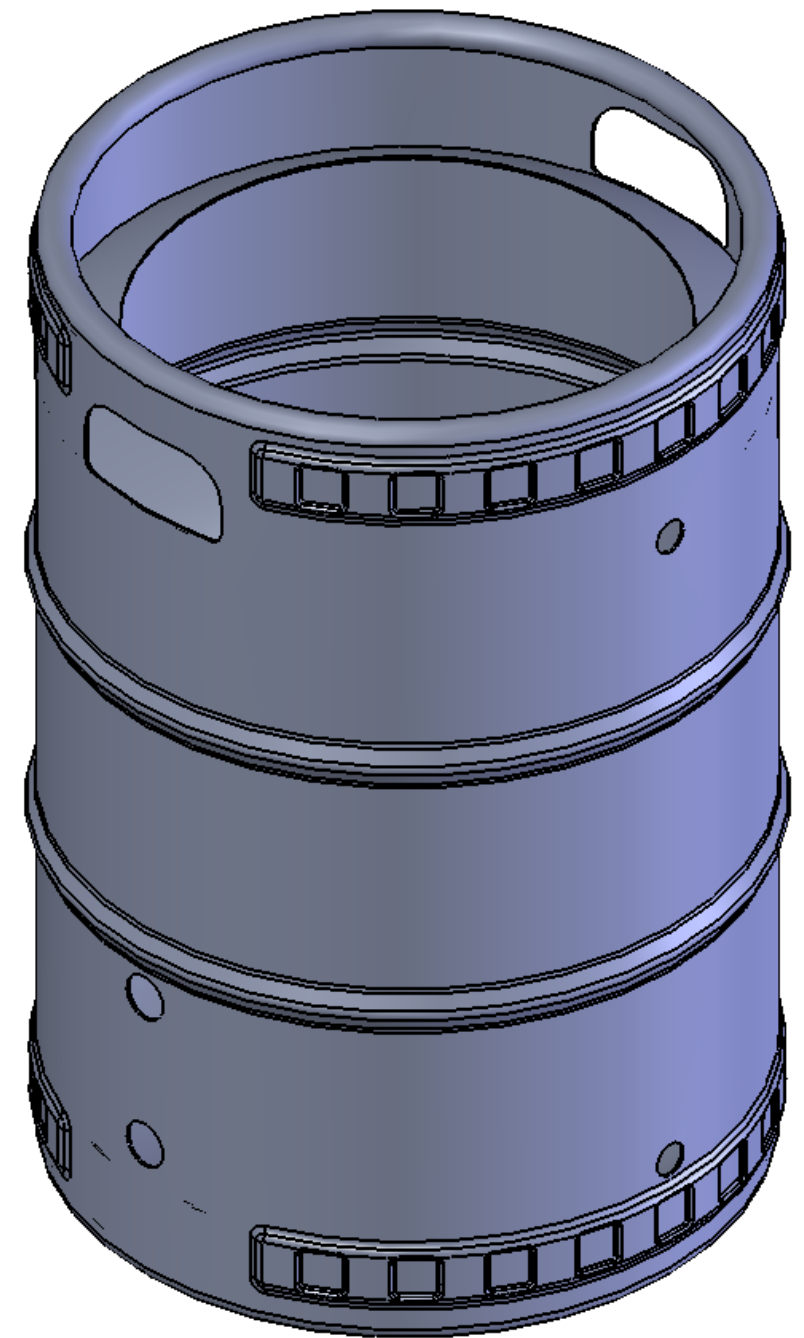
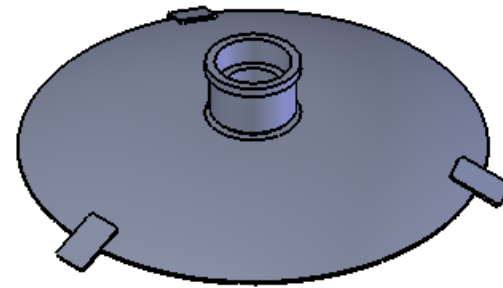
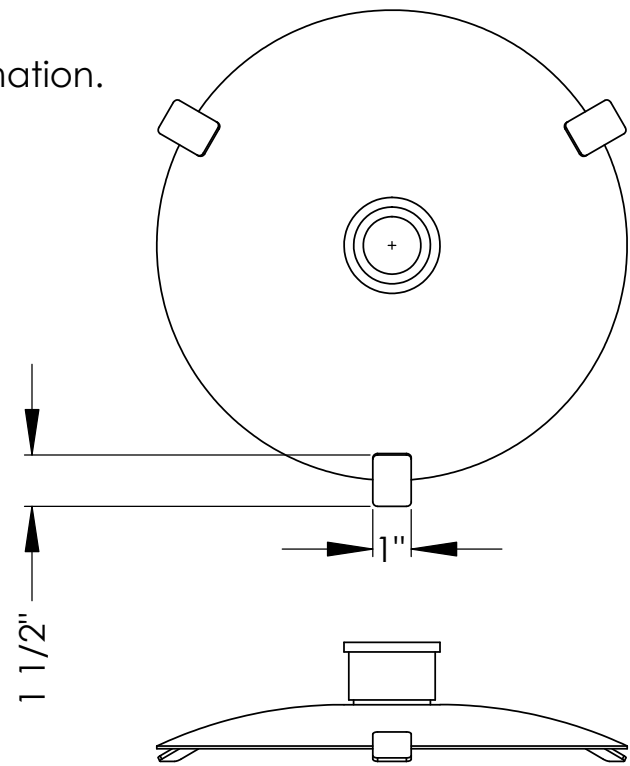
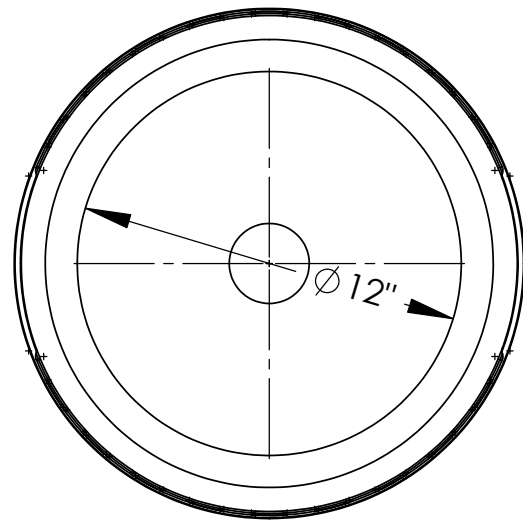
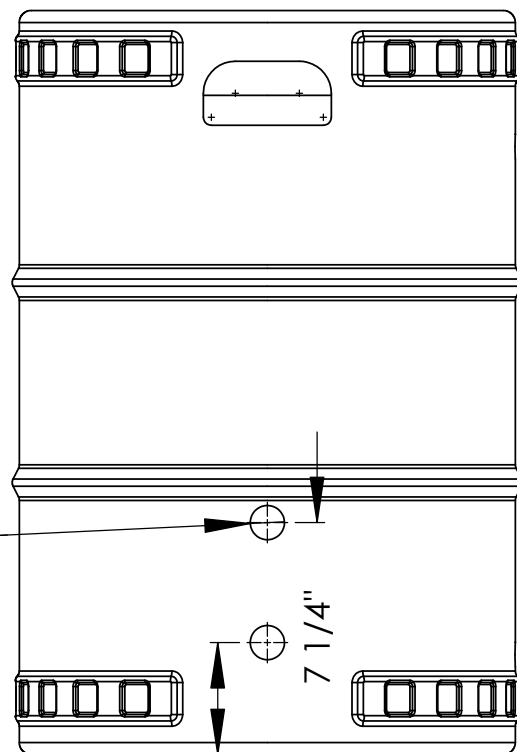


Notes:  
 Locate and purchase a keg legally.  
 Depressurize and drain keg safely.  
 Locate holes 90 degrees apart.  
 See Mash Tun Assembly Parts List for hole saw information.  
 Hole in the top, cut with a plasma torch.  
 Keep cut out to make lid.  
 Lid Tabs are 14 gage stainless steel.



$\phi 25/32"$   
2 plcs



$\phi 1 1/16"$   
2 plcs

USE THIS DOCUMENT AS A GUIDE ONLY.  
 MALTY TASKING, LLC IS NOT RESPONSIBLE  
 FOR THE USE OF THIS INFORMATION.



THE INFORMATION CONTAINED IN THIS DRAWING IS THE SOLE PROPERTY OF MALTY TASKING, LLC. ANY REPRODUCTION IN PART OR AS A WHOLE WITHOUT THE WRITTEN PERMISSION OF MALTY TASKING, LLC IS PROHIBITED.

PERSONAL USE GRANTED.  
 FOR PERSONAL USE ONLY!

UNLESS OTHERWISE SPECIFIED:  
 DIMENSIONS ARE IN INCHES  
 TOLERANCES:  
 Decimals X.XX ±0.050  
 X.XXX ±0.010  
 X.XX ±0.005  
 X.XXX ±0.003  
 ANGLES ± 0.5°

DRAWING NUMBER: Kettle Drawing		REV:
DESCRIPTION: Brewing System Kettle Drawing		
PROJECT NAME: Malty Tasking Brewing System		
DRAWN BY: Steve Becker		SIZE
LOCATION: Your Brewery		<b>B</b>
VENDOR NAME: Local Blacksmith Shop		
VENDOR #:		
MASS:	MATERIAL: Chrome Stainless Steel	
SCALE: 1:6	SHEET 1 OF 1	DATE: 6/9/2010