

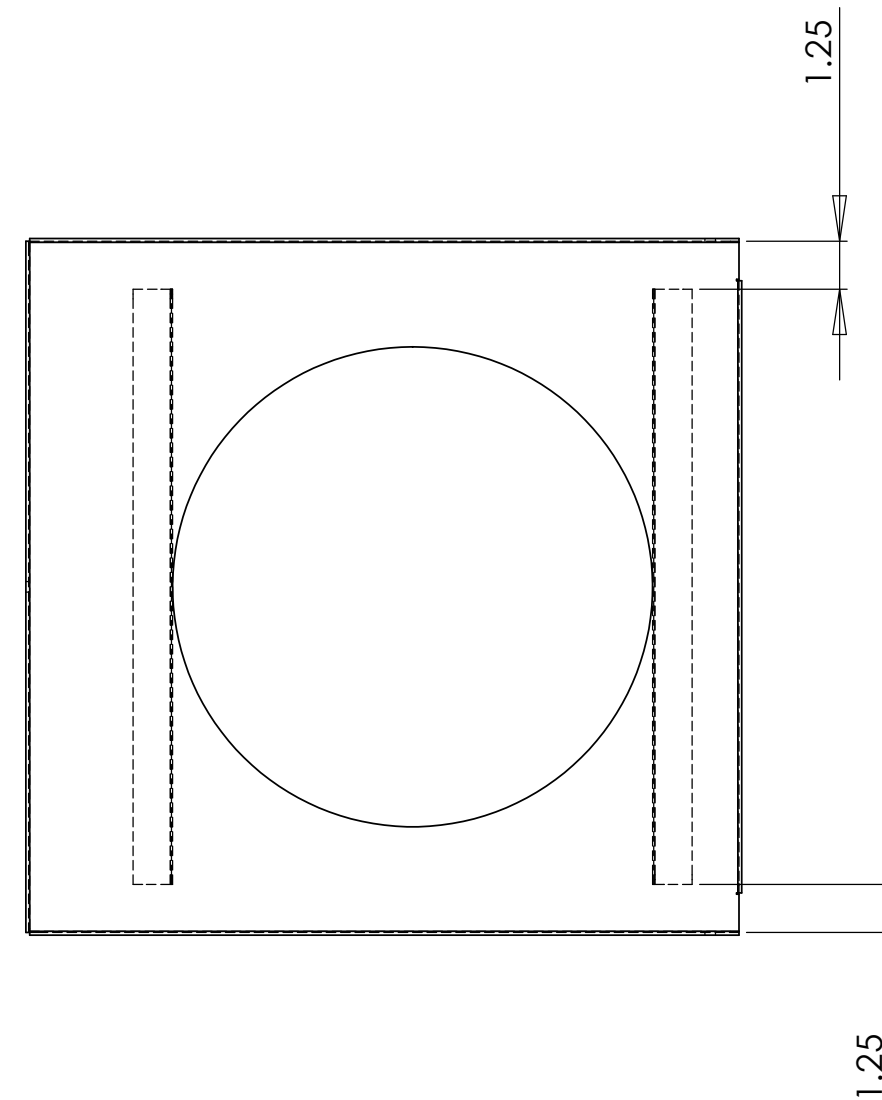
8 7 6 5 4 3 2 1

D

C

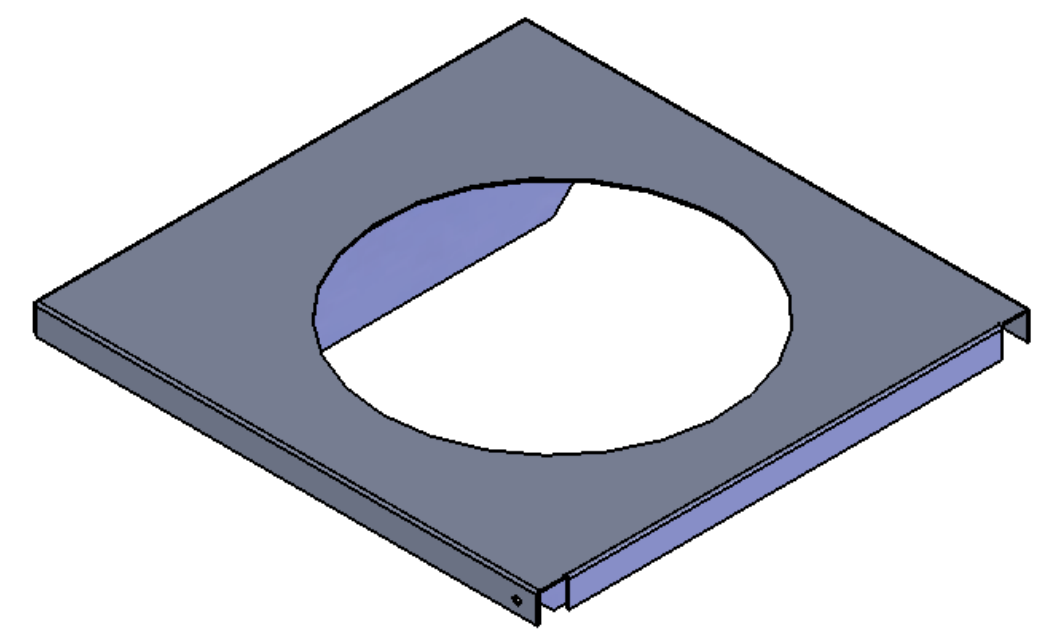
B

A



Spot or skip weld wind shields to Burner Plate.
 Note: each wind shield is tangent to the cut out.

The burner plate will warp as it gets hot. Wind shield must be welded firmly enough to resist warping of the burner plate.

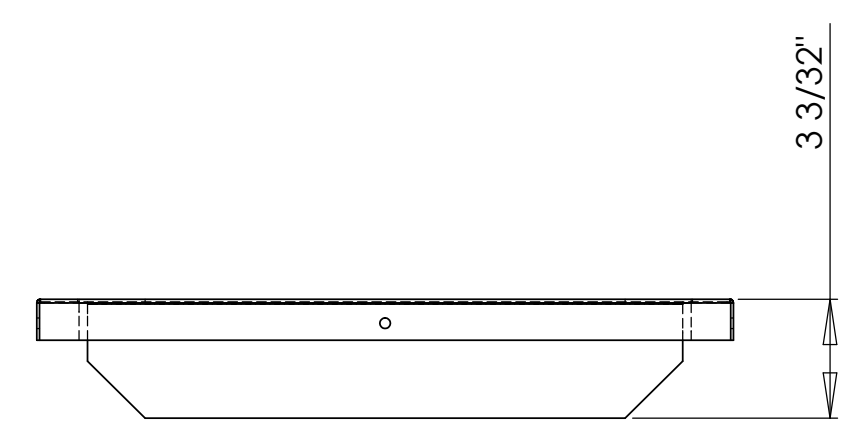
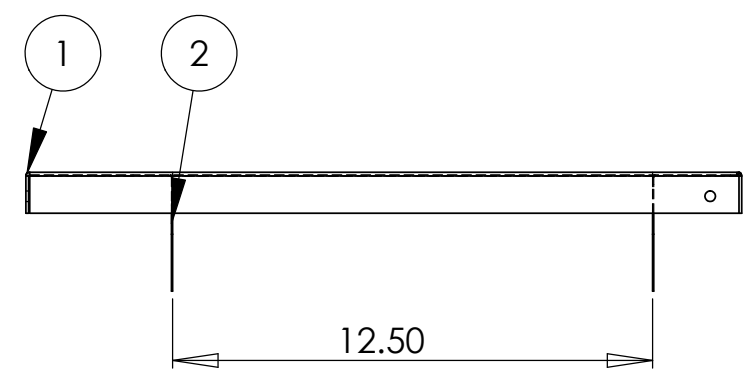


D

C

B

A



ITEM NO.	PART NUMBER	QTY.
1	Burner plate 1	1
2	wind shield	2



THE INFORMATION CONTAINED IN THIS DRAWING IS THE SOLE PROPERTY OF MALTY TASKING, LLC. ANY REPRODUCTION IN PART OR AS A WHOLE WITHOUT THE WRITTEN PERMISSION OF MALTY TASKING, LLC IS PROHIBITED.

PERSONAL USE GRANTED. FOR PERSONAL USE ONLY!

UNLESS OTHERWISE SPECIFIED:
 DIMENSIONS ARE IN INCHES
 TOLERANCES:
 Decimals X.XX ±0.050
 X.XXX ±0.010
 X.XXX ±0.005
 X.XXX ±0.003
 ANGLES ± 0.5°

DRAWING NUMBER: Burner Plate Assembly		REV: 1
DESCRIPTION: Brewing System Burner plate Assy.		
PROJECT NAME: Malt Tasking Brewing System		
DRAWN BY: Steve Becker		SIZE
LOCATION: Your Brewery		B
VENDOR NAME: Local Blacksmith Shop		
VENDOR #:		
MASS:	MATERIAL: 316 14 Ga Stainless Steel	
SCALE: 1:5	SHEET 1 OF 1	DATE: 5/6/2010

USE THIS DOCUMENT AS A GUIDE ONLY. MALTY TASKING, LLC IS NOT RESPONSIBLE FOR THE USE OF THIS INFORMATION.

8 7 6 5 4 3 2 1